

Figure 39A. Dark brownish-black, nearly opaque fragment of glass with extensive development of opaque quench phases. Fragment 318,146; plane polarized light; scale bar 0.1 mm.

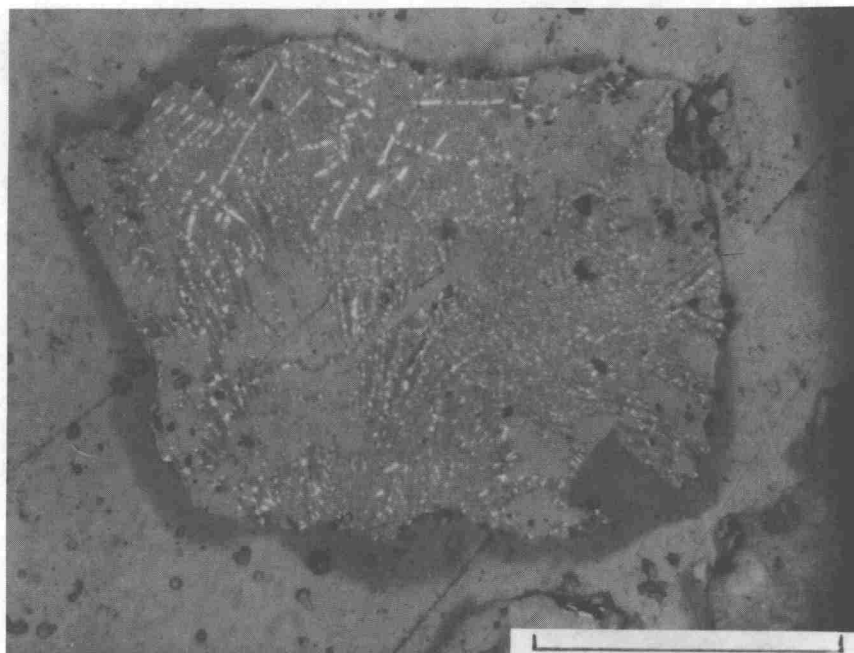


Figure 39B. Same view as Figure 39A; reflected light. The fragment displays well-developed quench textures. Light gray areas are probably pyroxene crystals; darker-gray areas (glass?) contain numerous, small, oriented quench opaque crystals.

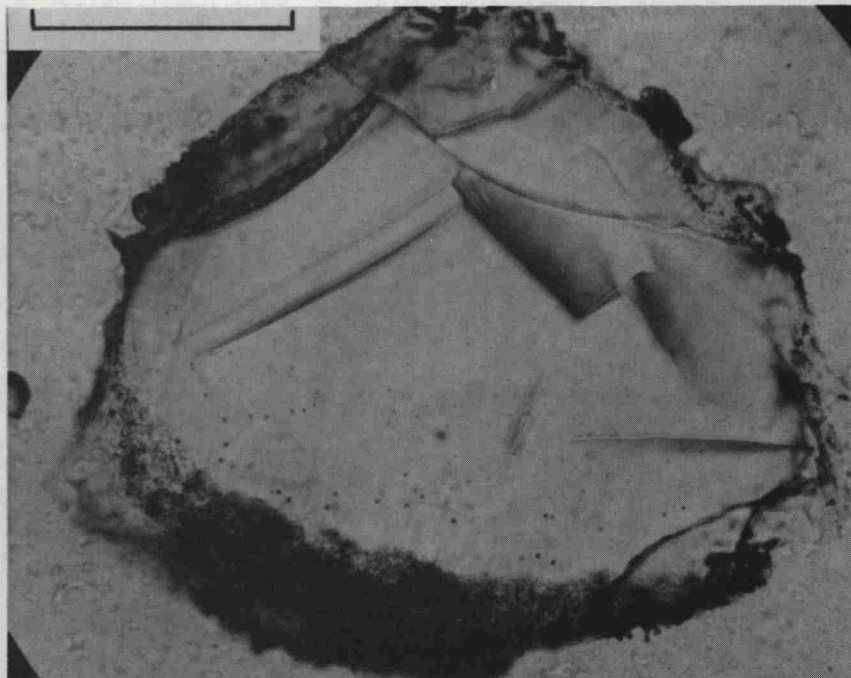


Figure 40A. Partly devitrified fragment of clear, colorless glass with a plagioclase-rich composition. Devitrification to spherulites of fine plagioclase has occurred in a thin marginal rim, often associated with fractures. Fragment 315,175; plane polarized light; scale bar 0.1 mm.

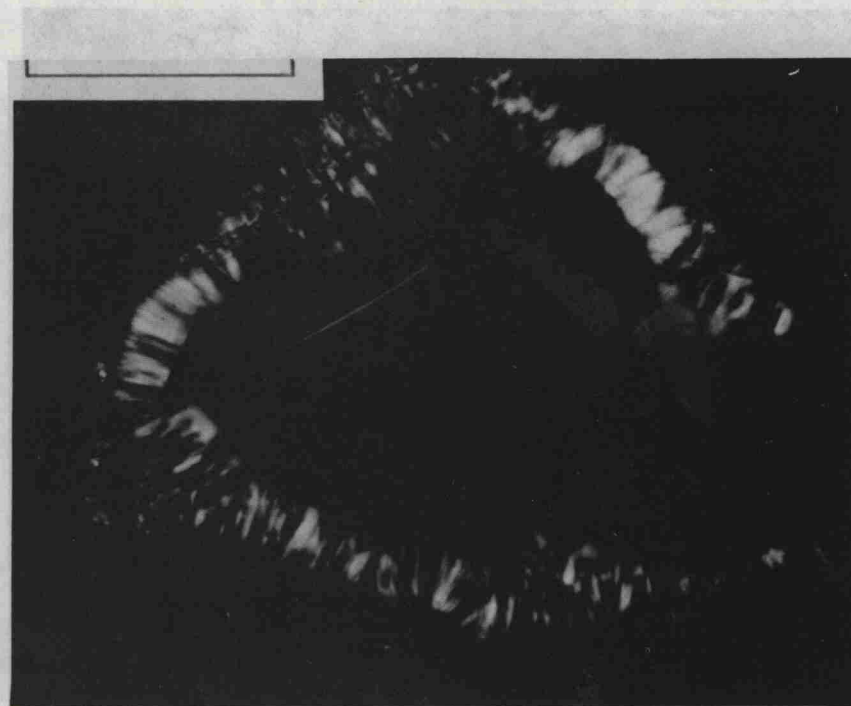


Figure 40B. Same view as Figure 40A; crossed polarizers. A birefringent rim around the fragment is produced by development of plagioclase microlites oriented approximately radially to the surface of the fragment.